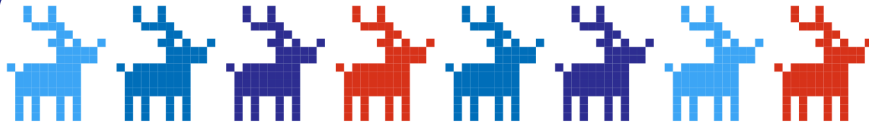
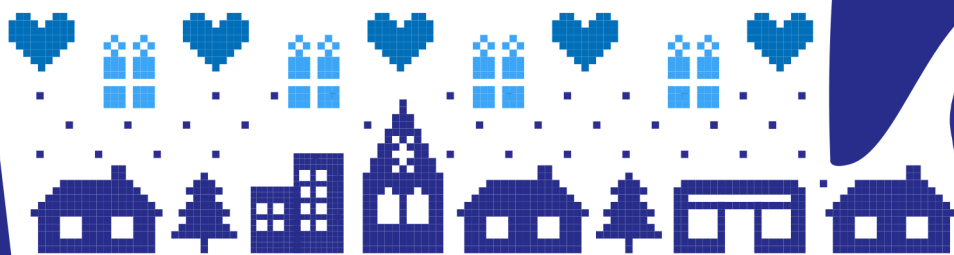


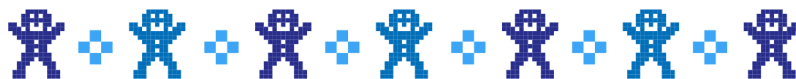
COME AND JOIN US!



# WINTER FAIR @ THE WINNS



SATURDAY 6 DECEMBER  
XXXXX 12-3PM XXXXX



XXXX SAVE XXXX  
**THE DATE!**



FREE ENTRY



The Winns Primary School, Elphinstone Road entrance, E17 5ET  
If you would like to help at this event contact [fotwchair@gmail.com](mailto:fotwchair@gmail.com)



# NON-UNIFORM DONATIONS DAY!

✧ ✧ Friday 28th November 2025 ✧ ✧  
.....

Kids can wear whatever they like (as long as it's practical and comfortable!). If you can, please donate one or more of the listed items below.

Please only donate **new** or **nearly new** items in **good condition**.  
Everything donated will be sold or used as prizes at the **Winns Winter Fair on Sat Dec 6th**.

## Tombola Prizes

Unwanted gifts and toys

## Chocolate

Bars, boxes, bags or tins for  
selling at stalls & tombola

## Craft Materials

For the fair's  
craft zone

## Small Prizes

Party bag fillers; new or nearly  
new small toys, pens, games

## Festive Jumpers

Good condition kids festive  
jumpers for the pre-loved stall

## Books

## Festive Wrapping Paper

## Lego

## Napkins and/or Paper Plates

## Raffle Prizes

## Bric-a-brac



WINNS NIGHTS  
PRESENTS...



# QUIZ NIGHT

THURSDAY 20TH NOVEMBER  
@ THE WINNS PRIMARY SCHOOL

TEST YOUR KNOWLEDGE, WIN PRIZES AND  
SUPPORT THE SCHOOL!

7.45PM - 9.45PM

(QUIZ STARTS AT 7.45PM)

TICKETS F6 | £30 PER TABLE

[CLICK HERE TO BUY TICKETS](#)

Licensed bar  
sponsored by

**central**  
1992

CAN YOU WIN THE  
COVETED QUIZ CUP?





# WINNS WEEKLY

14.11.2025

Hayso isbuucaan  
wanaagsan!

Somali  
Have a good weekend!



Headteacher: Fiona Judge / The Winns Primary School, Fleeming Rd. E17 5ET  
020 8527 1872 / [www.thewinnsprimaryschool.co.uk](http://www.thewinnsprimaryschool.co.uk) / [office@winns.waltham.sch.uk](mailto:office@winns.waltham.sch.uk)

## DATES FOR DIARIES W.B. 17.11.2025

<b>Tuesday 18<sup>th</sup> November</b>	6ES Museum of Docklands trip
<b>Wednesday 19<sup>th</sup> November</b>	Reception 2025 Parent tour (9:30am) 3AF Class Assembly (9:10am)
<b>Thursday 20<sup>th</sup> November</b>	6AM Museum of Docklands trip 5CF Class Assembly (9:10am) FOTW Quiz Night
<b>Friday 21<sup>st</sup> November</b>	Photo and flu vaccine catch-up

Please remember to subscribe to [our online calendar](#) so that you receive automatic updates into your own calendar.

### CLAIRE LINNEY AUTHOR VISIT

This week, we had the pleasure of hosting a visit by Claire Linney, author of the best-selling children's book Time Tub Travellers, as part of our Black History Month celebrations. A now familiar face in school, Claire shared her personal journey, including her experiences growing up in leafy Surrey, then moving to London and the influences that shaped her as both a writer and advocate for diversity. In addition to reading an extract from her book, Claire engaged our children in conversations about representation, the importance of diversity in storytelling, and the ongoing fight against racism. She also offered historical perspectives that highlighted key moments and figures in Black history. Our pupils were especially thrilled about this visit, having already begun writing units inspired by Claire's life and work. Also, if your child's interest was sparked by Claire's visit, you can get hold of one of her books using the following link. <https://www.clairelinney.com/links> Via this link you can buy on Amazon or via her website with the code WINNS to get free postage and she will send them out directly.





# WINNS WEEKLY 14.11.2025

Headteacher: Fiona Judge / The Winns Primary School, Fleeming Rd. E17 5ET  
020 8527 1872 / [www.thewinnsprimaryschool.co.uk](http://www.thewinnsprimaryschool.co.uk) / [office@winns.waltham.sch.uk](mailto:office@winns.waltham.sch.uk)

## YEAR 6 VISIT THE MUSEUM OF DOCKLANDS

Our Year 6 children recently enjoyed an enriching trip to the Museum of Docklands. The visit deepened their understanding across several of their current learning units, including globalisation, twentieth-century conflict, and the transatlantic slave trade. Through fascinating exhibits and artefacts, the children explored how London's docks have shaped trade, migration, and the city's global connections over time. As they walked through the surrounding area, they also observed the striking architecture of Canary Wharf, reflecting on how the site has transformed from an industrial hub into one of London's most iconic financial districts. The visit offered valuable links between history, geography, and modern life – sparking lively discussions back in the classroom.





# WINNS WEEKLY 14.11.2025

Headteacher: Fiona Judge / The Winns Primary School, Fleeming Rd. E17 5ET  
020 8527 1872 / [www.thewinnsprimaryschool.co.uk](http://www.thewinnsprimaryschool.co.uk) / [office@winns.waltham.sch.uk](mailto:office@winns.waltham.sch.uk)

## Y5/6 SPORTSHALL ATHLETICS

This morning, a group of our year 5 & 6 children represented the school at the Waltham Forest School Games Sportshall Athletics competition. The children were competing to set the fastest times and record the furthest distances in a range of track and field events. Some of our squad were experienced "Sportshallers" but there were several children competing for the first time. As always, competition was fierce but the children represented the school brilliantly. We now await the results of the three remaining sessions to find out how we stack up against all the other schools. Well done everyone!



## Road Safety Week



Road Safety Week is taking place from 16–22 November 2025, and this year's theme is "Safe Vehicles Save Lives."

One great way to get involved is by running a "Be Bright, Be Seen" Day and 'Brighten your Bag' challenge!

This initiative encourages children to wear **bright** or **reflective** clothing to help them stay **visible** during the darker autumn and winter months.

It's a fun and engaging way to highlight the importance of road safety, especially for those walking, cycling, or scooting to school.

Schools can choose to:

- Invite pupils to wear fluorescent or hi-vis clothing and accessories
- Run road safety-themed lessons or assemblies
- Share visibility tips with families (e.g. reflective tags, bright coats, safe cycling gear)



Getting ready for Winter – Energy Saving for Schools Webinar - 20 Nov  
Contact [poppy.flint@walthamforest.gov.uk](mailto:poppy.flint@walthamforest.gov.uk) for more information



# WINNS WEEKLY 14.11.2025

Headteacher: Fiona Judge / The Winns Primary School, Fleeming Rd. E17 5ET  
020 8527 1872 / [www.thewinnsprimaryschool.co.uk](http://www.thewinnsprimaryschool.co.uk) / [office@winns.waltham.sch.uk](mailto:office@winns.waltham.sch.uk)



## FRIENDS OF THE WINNS NEWS

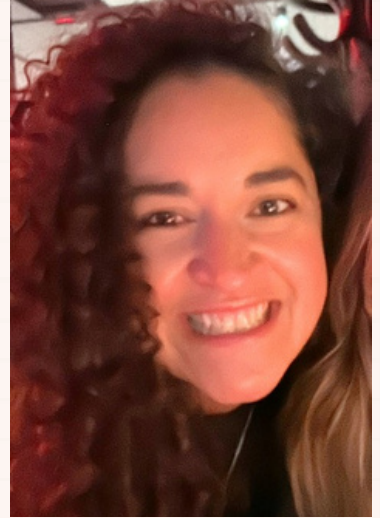
### WE'RE ALL FRIENDS OF THE WINNS

If you're a **parent or carer of a child at The Winns**, you're already a Friend of the Winns!

Friends of the Winns (FOTW) is a **registered charity** that brings our school community together through fundraising, wellbeing, and social events. It's all about **connecting, sharing ideas, and supporting our children's school experience**.

**Getting involved** - whether by attending events or volunteering - is a great way to meet other families, build relationships, have a chat and a good laugh along the way.

One of our FOTW volunteers, **Sophia Lopez Weitz**, spoke recently at the Reception coffee morning about her experience:



**As a family, we started in reception at The Winns, but moved abroad with work for 18 months. When we moved back to the UK, we reentered the Winns mid-academic year! With three children across different schools years and in different settings, helping out at FOTW events, or coming along to support, helped us reconnect with families we knew before and meet new families; and genuinely it really gave us the chance to come back to this amazing community who was so very welcoming of us!**



### WINTER FAIR PLANNING MEETINGS - THANK YOU!

A big thank you to everyone who joined our Winter Fair planning sessions - whether **online on Monday 11th** or in person at the **Rose & Crown on Thursday 13th**. It was a great chance for parents and carers to meet, share ideas, and give feedback. We'll also be holding a **post-pick-up face-to-face** session soon to reach as many families as possible - date to be confirmed.

### TEAM PRELOVED

As we get ready for the Winter Fair, Team Preloved is on the lookout for any **sturdy, portable, collapsible clothing rails with wheels** that could be donated. If you can help, please email [fotwchair@gmail.com](mailto:fotwchair@gmail.com) or let your class rep know.

Thank you! ❤️



Have ideas or feedback for FOTW? Email FOTW: [fotwchair@gmail.com](mailto:fotwchair@gmail.com)





# WINNS WEEKLY 14.11.2025

Headteacher: Fiona Judge / The Winns Primary School, Fleeming Rd. E17 5ET  
020 8527 1872 / [www.thewinnsprimaryschool.co.uk](http://www.thewinnsprimaryschool.co.uk) / [office@winns.waltham.sch.uk](mailto:office@winns.waltham.sch.uk)



## FRIENDS OF THE WINNS NEWS

### WINTER FAIR VOLUNTEERS

The Winter Fair will be on **Saturday 6th December, 12-3pm**, and we'd love your support to help make it a brilliant day for The Winns community.

Whether you can lend a hand with set-up, running a stall, or packing down at the end, every bit of help from parents and carers makes a real difference.

One of the ways you can support is your presence - come along to the fair, say hi and enjoy a fun, festive afternoon for kids and carers.

Please find the Volunteer form [here](#).



### WINTER FAIR DONATIONS

Your generous donations make a huge difference to the Winter Fair. These could be items for **selling on a stall, prizes for the raffle or games, or contributions to help our events run smoothly**. We **stagger** donations so families can give what they can, when they can, making it easier for everyone to get involved.

#### Main Donations Drop-Off - Non-Uniform Day (Friday 28th November)

Children are invited to bring in something to donate, such as: small toys, books, games, unopened toiletries, or wrapped sweets & chocolate. **Reminder slips** will come home in school bags closer to the day.

If it's difficult for your child to carry their donation in their school bag, parents and carers are welcome to **drop items at the school office on Friday 28th November**. We'll also be looking for **volunteers to help sort donations on the 28th** - a volunteer sign-up form will be shared soon!

#### Second Donations Drop-Off - (1st-5th December)

##### School Uniform Donations

If you have good quality, washed, second-hand uniform, please drop it at the school office by the morning of **Friday 5th December**. Team Preloved will sort all donations that morning and prepare the rails for browsing at the fair.

##### Festive Decorations Stall

This year we're excited to introduce a new Festive Decorations stall, run by Frances (Team Library Lead) and Karen (former FOTW co-chair).

The stall will feature **preloved and new/unused festive decorations**, so if you have any that you won't be using this year, please bring them to the school office between **1st-5th December**.

##### Café Tokeley - Home Baking Donations

Our Café Tokeley, named after The Winns' Family Support Officer Allison Tokeley, will once again serve homemade treats and hot drinks at low prices. We'd love donations of home-baked goods - please bring them on **Friday 5th December or on the day of the fair (Saturday 6th)**. To keep everyone safe, all baking must be **nut-free and clearly labelled** with any allergens. All proceeds go directly to Friends of The Winns.



# WINNS WEEKLY 14.11.2025

Headteacher: Fiona Judge / The Winns Primary School, Fleeming Rd. E17 5ET  
020 8527 1872 / [www.thewinnsprimaryschool.co.uk](http://www.thewinnsprimaryschool.co.uk) / [office@winns.waltham.sch.uk](mailto:office@winns.waltham.sch.uk)



## FRIENDS OF THE WINNS NEWS

### WINTER FAIR RAFFLE: APPEAL FOR RAFFLE LEAD

One of the biggest ways the Winter Fair raises funds for FOTW is through its raffle - tickets start at 20p, with fantastic goodies and experiences on offer! We're looking for a **RAFFLE LEAD (or two!)** to support our two annual fairs. The role can be shared and involves:

- **Coordinating raffle prizes** donated by parents, carers and local businesses
- **Approaching** local businesses for prize donations
- Helping **publicise** prizes and the raffle
- Supporting set-up on the **RallyUp system**
- Leading **prize allocation** to winners

If this sounds like something you'd enjoy, please contact [fotwchair@gmail.com](mailto:fotwchair@gmail.com) or let your Year Rep know.



### WINTER FAIR RAFFLE PRIZES

If you know someone that could donate a **prize, vouchers or an experience** towards the raffle, please get in touch at [fotwchair@gmail.com](mailto:fotwchair@gmail.com).

- Do you know a **business**, small or large, that can help?
- Do you have a **skill** that you can offer?
- Are you connected to anyone **who offers experiences and events**?

The FOTW raffle is only a success because of your kind donations, asks around and connecting the dots between who you know and how they can help. you can help, please email [fotwchair@gmail.com](mailto:fotwchair@gmail.com) or speak to your **year reps**. The raffle will launch with introductory prizes on **Friday 21st November**, and the prize list will continue to be updated until after the Winter Fair, when the raffle will be drawn.

### TEAM LIBRARY

**Thank you for all the dinosaur books that have recently been donated!**



As part of the pre-holiday season clear out, team library are keen to know if you have any surplus surplus kids non-fiction books, particularly on:

- **CRAFT** - Introduction books to knitting, crocheting, sewing.
- **MUSIC**
- **ART**
- **SPORTS**

If you do, please consider donating them to the Library team with drop off at the main office.



# WINNS WEEKLY 14.11.2025

Headteacher: Fiona Judge / The Winns Primary School, Fleeming Rd. E17 5ET  
020 8527 1872 / [www.thewinnsprimaryschool.co.uk](http://www.thewinnsprimaryschool.co.uk) / [office@winns.waltham.sch.uk](mailto:office@winns.waltham.sch.uk)



## FRIENDS OF THE WINNS NEWS

### CHRISTMAS CARDS - DEADLINE EXTENDED TO MONDAY!

**Thank you to everyone** who has ordered their Christmas Cards, Mugs, Calendars etc so far.

Due to popular demand, the deadline for orders has now been extended so you have until the end of **MONDAY 17TH NOVEMBER** to order.

So don't delay, order [here](#) today - the code you need when ordering is on the your child's design.

**LOST YOUR ARTWORK CODE?** Then email [gwz.cassavetti@gmail.com](mailto:gwz.cassavetti@gmail.com) with your child's name and class.

All orders will be **dispatched on the 25th November** so you should receive them that week. And don't forget, a percentage of all sales go to Friends of the Winns.



### DATES FOR YOUR DIARY



#### NOVEMBER:

**20<sup>th</sup> Winns Quiz night**  
(sold out)

**28<sup>th</sup> Non uniform day & Winter Fair donations** if possible)

#### DECEMBER:

**1<sup>st</sup>-5<sup>th</sup> Donations accepted for Preloved uniform and Xmas decorations stand**

**2<sup>nd</sup> Present wrapping evening** for the Winter Fair

**5<sup>th</sup> Baking donations accepted**

**6<sup>th</sup> Winter Fair 12-3pm** (baking donations also accepted on the day)

