



Wiggle for winns

THURSDAY
JUNE 12TH

SPONSORED
DANCE-A-THON
FOR THE WINNS
PRIMARY SCHOOL



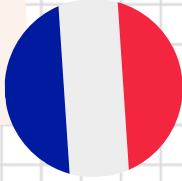


WINNS WEEKLY

6.6.2025

Bonne fin de semaine!

French
Have a good weekend!



Headteacher: Fiona Judge / The Winns Primary School, Fleeming Rd. E17 5ET
020 8527 1872 / www.thewinnsprimaryschool.co.uk / office@winns.waltham.sch.uk

DATES FOR DIARIES **WB 9.6.2025**

Monday 9th June Creative Weeks start

Y1 Phonics Screening Checks (all week)

Thursday 12th June Wiggle For Winns (FOTW Sponsored Dance Event)

Please remember to subscribe to [our online calendar](#) so that you receive automatic updates into your own calendar.

LONDON YOUTH GAMES 3V3 BASKETBALL FINAL

Our Y6 3v3 Basketball team competed in the London Youth Games Finals on Thursday this week, representing Waltham Forest. As ever, the standard of competition was incredibly high, with most teams from across the capital boasting a number of club players. Our children did themselves proud and secured a 15th place finish overall out of 27 teams who entered. Well done Year 6!



Eid Mubarak to those celebrating over the weekend!



4MH CLASS ASSEMBLY

Last week, 4MH impressed us all with their fantastic class assembly! They took us back in time with fascinating facts about the Anglo-Saxons, including the discovery of the incredible Sutton Hoo treasure. In science, they shared what they've learned about keeping our teeth healthy—there were some brilliant top tips! To finish, the class performed a lively and heartfelt rendition of Try Everything, reminding us all about the importance of resilience and never giving up. Well done, 4MH, for your confident performances and for sharing your learning so enthusiastically with your families! Thank you to Ms. Haffeji and Ms. Lottie for helping to prepare the class and to all the families who were in the audience to support their children.



Y6 HEALTHY HEART WORKSHOP

This week, our Year 6 children took part in a fascinating workshop all about heart health, delivered by a Cardiac Specialist Nurse. The session explored how the heart works, why it's such a vital organ, and what we can do to keep it healthy. The children enjoyed learning a range of interesting facts and were encouraged to think about the impact of diet, exercise, and lifestyle on heart function. It was a highly informative and engaging session that left the children feeling inspired to make healthy choices for their bodies and their futures.



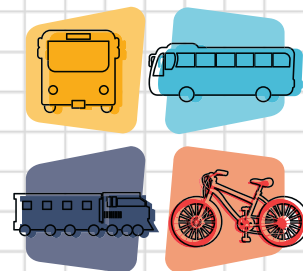
WINNS WEEKLY

6.6.2025

Headteacher: Fiona Judge / The Winns Primary School, Fleeming Rd. E17 5ET
020 8527 1872 / www.thewinnsprimaryschool.co.uk / office@winns.waltham.sch.uk

Y6 BRITISH TRANSPORT POLICE WORKSHOP

Year 6 enjoyed a visit from the British Transport Police this week, who spoke about staying safe on public transport as they prepare for secondary school. The session was informative and engaging, helping pupils understand how to travel responsibly and confidently. Thank you to BTP for supporting our pupils' transition!



YEAR 6 ART PROJECTS

Year 6 have been busy brightening up our new art studio with some fantastic creative projects! They used window transfer techniques to design colourful artwork now proudly displayed on the studio windows. Indoors, pupils worked with weaving and papier mâché to craft giant insects and vibrant flowers, bringing the space to life. Their creativity and teamwork have made a wonderful impact – well done, Year 6, for making the studio truly inspiring! Thank you to our visiting artists for their expertise!



Bike Week 2025: get pedalling!



From 9–15 June, we're celebrating Bike Week, the UK's biggest week-long celebration of cycling.



This year's theme is "Be a Bike Hero" – encouraging everyone to discover the benefits of cycling for health, happiness and the planet.

Whether it's riding to school, the park or just for fun, cycling is a great way to get active and explore your local area.

Find out more at cyclinguk.org/bikeweek

Join a Family Cycle Ride with Joyriders

Families are invited to take part in free guided Sunday cycle rides this summer with Joyriders, starting from Leyton Jubilee Park. Destinations include Walthamstow Wetlands, the Olympic Park, and Stratford. It's a great way to build confidence, meet other local families and explore new routes together.

-  Rides run on selected dates from May to October, 10am–1pm.
-  Book your spot and see the full ride schedule at: joyriders.org.uk/ride-with-us

Let's get more families pedalling this summer!



Contact us now to share your active travel stories with us:
schooltravelplans@walthamforest.gov.uk





FRIENDS OF THE WINNS NEWS

NEXT WEEK - WIGGLE FOR WINNS



On Thursday 12th June the children will be taking part in fun dance activities during the school day for our sponsored dance-a-thon: **Wiggle For Winns!!**

A sponsorship form will be coming home in the children's bags or you can add your sponsorship donations online here:

<https://www.gofundme.com/f/wiggle-for-winns>

We are currently raising money to improve the school's well being spaces and make the new art studio amazing.

As well as wiggling at school you could sponsor extra dancing at home, or learn the dance yourself!

Any sponsorship is appreciated !

If you are a current UK tax payer please make sure you add your full name, address and postcode to the sponsorship form so we can claim Gift Aid at no extra cost to you.

TEA TOWELS

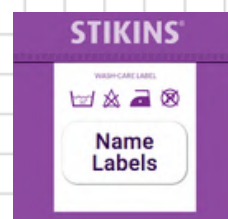
Add to your collection of tea towels featuring your little ones' self portrait - and help raise funds for Friends of the Winns! They make great presents, so stock up for Birthdays and Christmas now. The deadline for orders is the 22nd June

Get your Tea Towels here: <https://tinyurl.com/529ac5z4>



NEED LABELS FOR YOUR CHILD'S CLOTHES?

Then consider ordering from Stikins. As a member of **Stikins fundraising scheme** we receive a 30% donation every time you make a purchase. To order, visit <https://www.stikins.co.uk/> and quote the school's fundraising number - **25586** - when you check out.



Have ideas or feedback for FOTW? Email Karen, Co-Chair of FOTW: fotwchair@gmail.com



Headteacher: Fiona Judge / The Winns Primary School, Fleeming Rd. E17 5ET
020 8527 1872 / www.thewinnsprimaryschool.co.uk / office@winns.waltham.sch.uk



FRIENDS OF THE WINNS NEWS

SUMMER FAIR - SPONSORSHIP BOARDS - WE NEED YOUR HELP!



The Winns Summer Fair is fast approaching and **WE NEED YOUR HELP!**

Central Estates will provide us with **£1000** if we can get 100 households to sign up to host a board outside their property.

We currently need 33 more homes to sign up to reach that target. We're particularly keen to get sign up from homes that haven't hosted a board before or for a while.

You simply need a space in front of your home - a wall, a gate. somewhere where the sign can be easily tied or erected. If you are renting, you'll need to seek permission from whoever you rent from before signing up to host.

More information can be found on the google form below - the deadline to let us know if you can host is by 3pm this Monday the 9th of June.

<https://forms.gle/wPN9rZuQ821X7RE39>

If you, your neighbours or friends in the local area can help sponsor, then you can also email address details directly to fotwvictoria@gmail.com.

SUMMER FAIR - NON UNIFORM DONATIONS DAY



Get your donations ready! Non-uniform day will be on **Friday 20th June** when kids can wear whatever they like (within reason - please make sure it's practical and comfortable). If you can, then please donate one or more of the items listed below. Please only donate **new or nearly new items in good condition**. Everything donated will be sold or used as a prize at the Winter Fair:

- **Tombola Prizes**
- **Small Prizes**
- **Children's books**
- **Pimms, Wine or Prosecco**
- **Pre-loved Uniform**
- **Napkins/ Paper Plates**
- **Unused Cosmetics or Toiletries**

Have ideas or feedback for FOTW? Email Karen, Co-Chair of FOTW: fotwchair@gmail.com





FRIENDS OF THE WINNS NEWS

SUMMER FAIR - RAFFLE HELP NEEDED!

Would you like to join the Raffle team? We have a small dedicated team of parents who source prizes, manage donations and deliver prizes for every fair. We could always use more help! Please email fotw.chair@gmail.com if you can be a part of making our next raffle even better than the last!

We are also looking for raffle prizes so if you own, work for or know of a wonderful business that could offer a prize for our raffles then please get in touch: fotwchair@gmail.com



BASKETS NEEDED

Can you donate a basket to the raffle? We need baskets and containers to create raffle prizes. Please bring any good quality baskets or prize containers to the school office



SUMMER FAIR - HAVE YOU GOT GREEN FINGERS?



Could you donate some plants to the summer fair?

We will again be hosting a plant stall at the fair and are looking for keen gardeners to donate plants. Donations can be brought to the school office on Friday 27th June or on the day of the fair (the 28th).

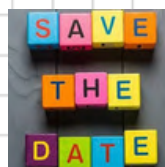
SUMMER FAIR - WANT TO VOLUNTEER?

Would you like to help before, during or after the fair?

We need a lot of volunteers to help make the fair as successful as possible. A sign up form will be posted soon but in the meantime, you can join the FOTW Whatsapp group here: <https://tinyurl.com/dk7jc2ef> or if you have an idea for something that could be held at the fair then please email fotwchair@gmail.com



DATES FOR YOUR DIARY



MAY:

JUNE:

JULY:

- 12th - Wiggle For Winns
- 20th - Non-Uniform Donations
- Day
- 28th - Summer Fair

Our events are included in the Winns [online calendar](#) and you can receive automatic updates into your own calendar by subscribing.

Have ideas or feedback for FOTW? Email Karen, Co-Chair of FOTW: fotwchair@gmail.com



WINNS WEEKLY

6.6.2025

Headteacher: Fiona Judge / The Winns Primary School, Fleeming Rd. E17 5ET
020 8527 1872 / www.thewinnsprimaryschool.co.uk / office@winns.waltham.sch.uk



THE FRIENDS OF THE WINNS

WHO ARE FRIENDS OF THE WINNS?

We are you! If you are a parent of a child at The Winns Primary School then you're automatically a Friends of The Winns member. Run by a committee of parents, the Friends of the Winns is a collection of volunteers who run events throughout the year to raise much needed funds for our school. But most importantly, we have fun!

WHERE DOES THE FUNDRAISING GO?

All money raised goes to the school to give the children the best educational experience possible. In recent years, we have supported a number of projects including the Main School and Reception playground transformations, the installation of a teaching kitchen, School Library improvements, and the purchase of new AV equipment.

Also, 10% of all money raised by Friends of the Winns goes to the Family Support Fund. This is managed by the school and offers support to those families that need it most.

WANT TO VOLUNTEER WITH FOTW?

The Friends of the Winns is a charitable organisation that is run completely by parent volunteers. You can volunteer at anytime and can give us as much time as you can (even an hour helps). You don't need to hold an official FOTW role or be voted in to be a volunteer!

We are also on the look out for people to help in a number of ways, whether that is with the Library Team, the Pre-loved Team on at one of our many events. Interested? Then please email fotwchair@gmail.com or join the FOTW Whatsapp group: <https://tinyurl.com/dk7jc2ef>

WE ❤️ VOLUNTEERS!



OTHER WAYS TO SUPPORT

SIGN UP TO EASYFUNDRAISING!

Easyfundraising is a simple way for you to support the school. Over 7,500 brands will donate to Friends of the Winns for free every time you use the app or browser extension to shop. **It costs you nothing extra!**

Sign up here: <https://www.easyfundraising.org.uk/causes/friendsofthewinns>

ONLINE DONATIONS - You can set up a regular payment or make a one off donation through the Charities Aid Foundation. All the details can be found here:

<https://cafdonate.cafonline.org/26249#!/DonationDetails>

Have ideas or feedback for FOTW? Email Karen, Co-Chair of FOTW: fotwchair@gmail.com





NON-UNIFORM DAY DONATION DRIVE

FRIDAY 20TH JUNE 2025



Kids can wear whatever they like (as long as it's practical and comfortable!). If you can, please donate one or more of the listed items below.

Please only donate **new** or **nearly new** items in **good condition**. Everything donated will be sold or used as prizes at the **Winns Summer Fair on Sat June 28th**

Tombola Prizes

Unwanted gifts and new toys

Small Prizes

Party bag fillers; new or nearly new small toys, pens, games

Children's Books

Good condition

Bric à Brac, Toys & Games

Good condition used toys, homewares, unused cosmetics or toiletries

Pre-Loved Uniform

Jumpers, cardigans, dresses, trousers or shorts.

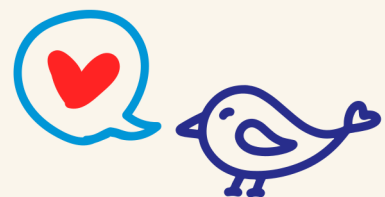
Pimms, Wine
or Prosecco

Napkins and/or
Paper Plates





SAVE THE DATE!
SATURDAY 28th JUNE



The Winns Primary School, Elphinstone Road entrance, E17 5ET
We can accept cash or cards at the event.



CREATE CONNECT COLLABORATE

Connecting to culture,
creating curiosity.

Step into a celebration of
our children's imagination,
creativity and curiosity at
the Summer Fair showcase.



Blue Hall, Winns Primary
Saturday 28th June
(During Summer Fair)



BECOME A VOLUNTEER PARENT/CARER CHAMPION



Parent/Carer champions may:

- Facilitate workshops and 121 support
- Help set up information sessions for parents at community events
- Signpost and support parents to find help and advice from the Family Hub

AS A PARENT/CARER CHAMPION YOU WILL RECEIVE

- TRAINING AND ONGOING SUPPORT
- THE OPPORTUNITY TO SUPPORT FAMILIES AND MEET OTHER PARENTS
- FUTURE REFERENCES AND DEVELOPMENT OPPORTUNITIES

TO FIND OUT MORE OR APPLY

Email: gemma.akinade@walthamforest.gov.uk

Web: <https://bit.ly/PCHAMPION>

Phone: 07586713368

WALTHAM FOREST

FAMILY HUBS

WELLBEING, CONNECTION, SUPPORT



Waltham Forest

What Parents & Educators Need to Know about EMOJIS

WHAT ARE THE RISKS?

Emojis are more than playful expressions — they form a fast-evolving digital language that many adults struggle to decode. For young people, this 'secret code' is central to how they communicate identity, humour and emotions. With over 5 billion emojis sent daily on Facebook Messenger alone, understanding these symbols is key to engaging meaningfully with digital youth.

GENERATIONAL MISCOMMUNICATION

An emoji like 👍 (thumbs up emoji) might seem friendly to adults, but teens often interpret it as sarcastic or passive-aggressive. These differing interpretations can create confusion or unintended tension in cross-generational conversations.

SHIELDING BULLYING OR PEER PRESSURE

When embedded in emojis, mean-spirited jokes or exclusionary language can fly under the radar. Terms like 'mid' or 'delulu' may seem harmless, but they can be used to undermine peers in subtle ways.

RAPIDLY SHIFTING MEANINGS

Emoji meanings can change overnight. A person standing emoji (👤) once signified awkwardness but might now be repurposed for something entirely different. This ever-changing lexicon can leave adults in the dark and young people vulnerable to misunderstanding or misuse.

MASKING DISTRESS OR HARM

Some emojis are used to discreetly signal troubling behaviours. For instance, 🍂 (falling leaves emoji) or 💊 (pill emoji) might suggest drug use, while 🌸 (wilted flower emoji) could hint at emotional struggles. Such usage can obscure serious issues, making them harder for trusted adults to detect.

NORMALISING RISKY BEHAVIOURS

Emojis can make harmful actions seem light-hearted or fashionable. Strings like 🔥👤 (fire + 'woozy' face + pill emojis) may appear humorous but can reference partying, intoxication or dangerous challenges, which might otherwise raise red flags.

Advice for Parents & Educators

LEARN THE LINGO

Stay updated with emoji trends and definitions using resources like emojipedia.org or Urban Dictionary. Knowing current meanings builds confidence when engaging with young people and helps spot potential concerns early.



CREATE SAFE SPACES FOR DISCUSSION

Encourage casual chats about emojis, online slang, memes, or social media trends. Showing interest without judgement reassures young people that they can talk about their digital world openly and safely.



ASK, DON'T ASSUME

Approach unfamiliar emojis with curiosity rather than suspicion. A light-hearted "What does 🍷 (juice box emoji) mean these days?" can open conversation and show that you respect their knowledge.



PRIORITISE TRUST OVER SURVEILLANCE

While parental controls and monitoring tools can be useful, emotional safety matters most. Be someone children and young people feel they can come to — not just someone who's watching them.



EMOJI CHEAT SHEET - The following slang terms and emojis are some common examples - please be aware this isn't an exhaustive list.

COMMON EMOJIS:

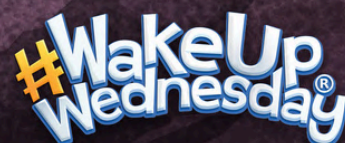
- | | |
|---|--|
| 🤡 (Clown face) Foolishness or clowning around | 🙄 (Pleading face) Over-affectionate or 'simping' |
| 😎 (Cool face) Cool, stylish or ruthless | 👁️ (Eyes) Watching drama unfold |
| 😘 (Hot face) Intense attraction or excitement | 🐐 (Goat) Greatest of all time (G.O.A.T.) |
| 😐 (Moai) Stone-faced, unbothered | 💅 (Nails) Confidence, sassiness, or indifference |
| 👑 (Crown) 'Slaying', as in doing great | 🚩 (Triangular flag) Red flag; a warning sign about someone's behaviour |

POTENTIALLY CONCERNING EMOJIS

- | | |
|--|---|
| 🍌 (Ear of corn) Slang for pornography (avoids censorship algorithms) | 🌸 (Wilted flower) Often used to convey emotional struggle or sadness |
| ❄️ (Snowflake, snowman, snow cloud) Can symbolise cocaine | 🐍 (Snake) Can represent betrayal or being 'two-faced' |
| 🗝️ (Key, lying face) Related to cocaine use | 🔫 (Water pistol) Sometimes used to reference violence or self-harm |
| 🍃 (Falling leaves, herb, maple leaf) Can symbolise cannabis | ⚠️ (Warning) Used to emphasise drama, threats or emotional turmoil |
| 💊 (Pill) May reference drug use or prescription misuse | 🍜 (Steaming bowl) Refers to nudes ('noods' is an abbreviation of noodles) |

Meet Our Expert

Keith Broni is a globally renowned emoji expert and the Editor in Chief of emojipedia.org, the world's number one emoji resource. He has an MSc in Business Psychology from University College London and an MBA from Quantic School of Business and Technology.



The National College®