

W WINNS WEEKLY

10.5.2024



Headteacher: Fiona Judge / The Winns Primary School, Fleeming Rd. E17 5ET
020 8527 1872 / www.thewinnsprimaryschool.co.uk / office@winns.waltham.sch.uk

DATES FOR DIARIES WB 13.5.2024

Monday 13th May KS2 SATs (all week)

Tuesday 14th May RMS Trip to William Morris Gallery
RCP Trip to William Morris Gallery
Year 5 Trip to Hackney Empire

Wednesday 15th May Reception Height and Weight Checks

Friday 17th May Year 2 Trip to Epping Forest

SAVE THE DATE: WINNS SUMMER FAIR 2024 - SATURDAY 6TH JULY

Join Friends of the Winns on Saturday July 6th for The Winns Summer Fair at the school. Bring yourselves, your friends and family and have a fabulously fun time whilst helping raise much needed funds for our school. There will be food, drinks, music, crafts, games, a raffle and bouncy castles to keep all the family amused. What's not to love! Stick the date in your diary now!



OUR VISION IN ACTION

Belonging - Through all of our extra-curricular activities, both during and after school, our children are able to explore their passions, form bonds with peers, and contribute to a supportive environment where everyone feels included, valued, and respected.

Growing - Look out for lots of exciting news and events in the coming weeks as we launch our main playground redevelopment project. We hope that the children will be as excited as we are to embark on the project to improve our opportunities for play.



WINNS WEEKLY 10.5.2024

Headteacher: Fiona Judge / The Winns Primary School, Fleeming Rd. E17 5ET
020 8527 1872 / www.thewinnsprimaryschool.co.uk / office@winns.waltham.sch.uk

GOOD LUCK!
BELIEVE IN YOURSELF
YOU CAN DO IT!
TRY YOUR BEST
STAY CALM
SMASH IT!

GOOD LUCK YEAR 6!

As the SATs tests approach, we want to take a moment to commend each and every one of our Year 6 children for their incredible hard work this year. They have shown resilience, determination, and an eagerness to learn that never ceases to amaze us. Remember, these tests are just one small part of your journey in school, and your efforts speak volumes about your abilities. Trust in yourselves, stay calm, and give it your best shot. Good luck – you've got this!

PLAYGROUND UPDATE Exciting News!

Our playground plans are almost finalised and we are ready to share them with you...

Our newly revamped playground will include:

- Three parkour tree islands between the astro-turf pitches – each island will be planted with an established tree and will include seating, and over time, shade.
- A 'rustic' play camp area where children can use their imagination to create different role-play scenarios.
- A creation station area which will be zoned and will support loose part play .
- A re-invigorated walkway with planting and new seating
- A new 'woods village' - here a large area of tarmac will be removed, providing a more natural, shady play area. This area will be planted with trees and shrubs and will include a beautiful tree house.

Why are we developing our playground?

Play is hugely important to a child's development. Through play, children develop their social skills and build lasting friendships, they learn to communicate and solve problems, use their imagination and experience real joy. Learning doesn't just happen in the classroom - a huge amount of learning happens outside. Here children learn to communicate with each other, resolve conflict, find solutions to problems, develop physically and socially and most of all experience what it is like to be a child having fun outside with their friends. We want to capture the magic of being a child and develop a space which encourages children to play freely, a space which is greener and more natural, includes quiet spaces but also spaces where children can socialise and use their imagination.



WINNS WEEKLY 10.5.2024

Headteacher: Fiona Judge / The Winns Primary School, Fleeming Rd. E17 5ET
020 8527 1872 / www.thewinnsprimaryschool.co.uk / office@winns.waltham.sch.uk

PLAYGROUND UPDATE (CONTINUED)

What would our children like?

Our playground design team carried out some workshops with groups of children. From the workshops came the following themes:

WILD NATURE

The most repeated item in the childrens drawing was trees. Trees also came out top in the questionnaire. The playground is nearby to Lloyd park, however the school grounds are barren of nature. This scheme put playable nature at the heart of the design.

TRANQUIL ESCAPE

The desire to escape the everyday- and the confines of the adult world came up repeatedly in the childrens models and drawings. This can be provided in playful structures, planting, and the diversity of play types provided for.

BEING FREE

"Feeling free" was the top sensation in the questionnaire children wanted to experince in the playground. This can be provided for both physically and emotionally, in this case with hiding places and natural sanctuary + play training!

MYSTERY + INTRIGUE

Mazes, puzzles and games featured frequently in the childrens designs and models. Imaginative play cues can be placed hidden throughout the playground to prompt communication and social play.



WINNS WEEKLY 10.5.2024

Headteacher: Fiona Judge / The Winns Primary School, Fleeming Rd. E17 5ET
020 8527 1872 / www.thewinnsprimaryschool.co.uk / office@winns.waltham.sch.uk

PLAYGROUND UPDATE (CONTINUED)

Funding

School is able to fund most of the work but we have a shortfall of £30K. However, we know we have an amazing community who we think will support us to raise this rather large sum of money! Friends of the Winns have some great plans for fundraising, including some sponsored events and the Summer Fair. If you can contribute in any way, we would be extremely grateful – look out for Friends of the Winns updates for fundraising.

Our playground design team, **Made from Scratch**, will be on site on Monday morning. Please do **drop in at 9.15am** and they will be able to share with you some more details about the design. Have a great weekend and enjoy the sunshine!



OUR VISION IN ACTION

Exploring - As part of their unit of work on Dinosaurs, year 2 have become palaeontologists this week, using their exploration skills to “dig” for fossils. Well done for using your skills to good effect!

Achieving - Good luck to all our year 6 children who will be undertaking their end of KS2 assessments next week. All of the staff are immensely proud of the children and we know they will be brilliant next week!



WINNS WEEKLY 10.5.2024

Headteacher: Fiona Judge / The Winns Primary School, Fleeming Rd. E17 5ET
020 8527 1872 / www.thewinnsprimaryschool.co.uk / office@winns.waltham.sch.uk

WINNS PRIMARY 30-A-THON - £30K FOR BETTER PLAY

Can your child do 30 'keepy uppys'? Skip for 30 minutes? Maybe play 30 minutes of chess? Or even pick up 30 pieces of litter?

From 20th - 25th May The Winns children will be doing a sponsored '30 things-a-day' to help raise £30k for the renovation of the main School playground. Sponsorship forms will be coming home with your child soon!

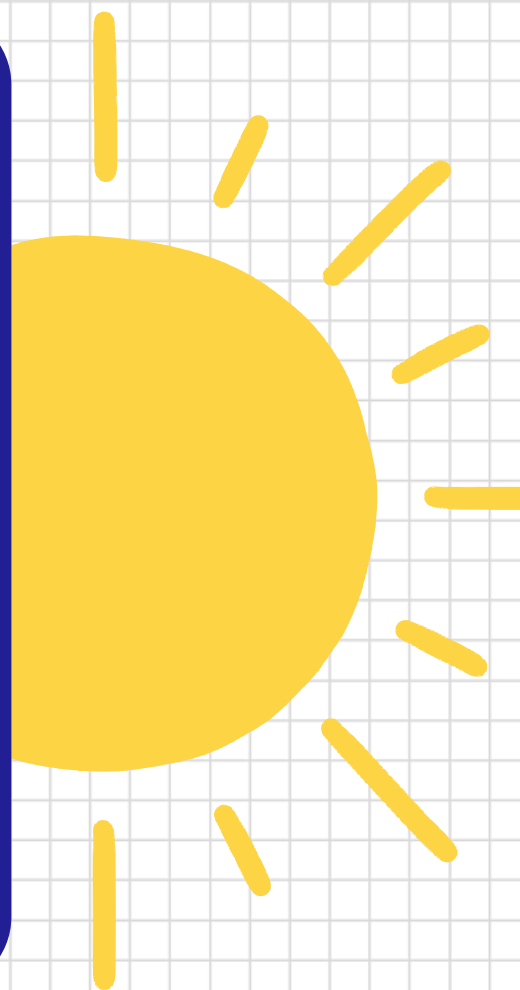


SUMMER TERM UNIFORM REMINDERS

During the year, we ask that all children wear black shoes or trainers. However, in Summer 2 when the weather becomes very hot, we are happy to relax our rules about black school shoes. Children are allowed to wear sandals or light, canvas shoes and they don't need to be black!

Please do make sure that if they are wearing sandals, that they fit well and are appropriate for climbing on apparatus. Crocs and loose fitting shoes should not be worn and children will not be able to use the climbing frames if they are wearing shoes that are not appropriate for climbing. We also recommend that your child wears socks (white) to prevent their toes getting scratched on tarmac.

As the temperature rises, please make sure you put sun cream on your child in the morning and also make sure their shoulders are covered. Please send your child in with a sunhat which is clearly labelled. We are continuing to collect lost jumpers everyday which have no names inside (often washed away). Sunhats will get lost - if they are clearly labelled, they are usually found and returned.



WINNS WEEKLY 10.5.2024

Headteacher: Fiona Judge / The Winns Primary School, Fleeming Rd. E17 5ET
020 8527 1872 / www.thewinnsprimaryschool.co.uk / office@winns.waltham.sch.uk

LUNCHTIME CHESS CLUB

Lots of our year 3, 4, 5 & 6 children have been attending our lunchtime chess club, where they have been learning the game and honing their skills. The club is run by one of our parents, Boyko, who kindly volunteers some of his time each week to teaching the children and improving their chess knowledge. Thank you, Boyko!



SAVE THE DATE: SPORTS DAYS

Wednesday 12th June - Year 1, 2 & 3

Thursday 13th June - Year 4, 5 & 6

Both Sports Days will take place from 9:30-11:30 (approx) at George White Sports Ground (Globe Rangers FC) on Billet Road, E17 5DN. We expect Sports Day to take place on these dates, but will confirm closer to the time.



YEAR 2 FOSSIL HUNTING

As part of Y2's Dinosaurs unit, 2CS became palaeontologists and found fossils like Mary Anning! The children used tools like brushes to carefully work through the soil to uncover hidden fossils beneath. The children worked in teams so brilliantly demonstrating great sharing skills and listening.





YEAR 1 PHONICS SCREENING CHECK

Parent information session

Monday 20th May

Please join us to find out more information about the statutory test taking place for Year 1 pupils in June 2024.

- ✓ **9 - 9.20am - Please enter via large gates on Elphinstone Road and meet under the shelter.**
- ✓ **4.30 - 4.50pm - online - link will be emailed.**



WALTHAMSTOW LEISURE CENTRE JUNIOR BASKETBALL MAY HALF TERM HOLIDAY

- Activities include dribbling, shooting, ball control, passing, teamwork and general fitness. Basketball is a great way to improve discipline, social skills and physical fitness. All sessions are coached by a level 2 qualified basketball coach with over 10 years' experience in coaching under 16s.

Tuesday 28 th May 2024	1- 2pm (7-10 Years Old)
	2 –3pm (11-15 Years Old)

- Cost – £6.30 per session

To book. Please go to



<https://betterflow.courseprogress.co.uk>

How to find us

Walthamstow Leisure Centre

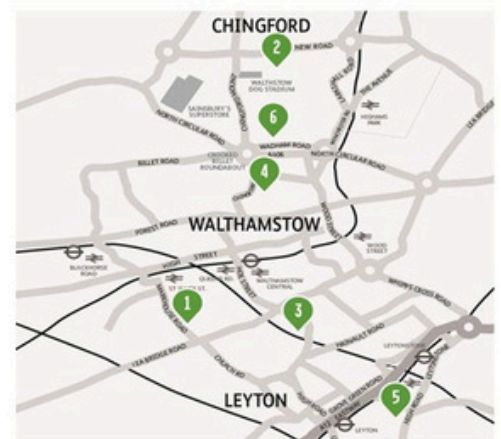
Markhouse Rd,

London E17 8RN

Tel: [020 8520 7464](tel:02085207464)

For more information Please email:

walthamstow@gll.org



Half Term Gymnastics Short Courses at Walthamstow Leisure Centre



5 – 7 years	8 + years
Friday 31st of May 2 - 4pm	Wednesday 29 th of May 2 - 4pm

Price - £12.50 per session

Available to book now on Better App or Better website

<https://betterflow.courseprogress.co.uk>

Come along and try out our fun packed gymnastics lessons or improve on existing gymnastics skills! Everyone is welcome

Please note places are limited we recommend booking early to avoid disappointment.

How to find us

Walthamstow Leisure Centre
Markhouse Rd, London E17 8RN

For more info email: walthamstow@gll.org

BETTER
the feel good place



EMPOWERING
PARENTS
EMPOWERING
COMMUNITIES

EMPOWERING PARENTS EMPOWERING COMMUNITIES

Ever feel like parenting is just too much?

**Empowering Parents Empowering Communities
classes are here to help**

Sessions are supervised by professional facilitators, and activities are led by trained EPEC parent group volunteers.

All volunteers are also parents who have enjoyed the EPEC sessions so much that they now wish to share their experiences with others

EPEC sessions are relaxed and informal.

You learn how to deal with tricky situations and keep cool when your children are having a meltdown

When: 18th April 2024 to 13th June 2024

How long : 7 weeks

When: Thursdays 10-12

Where: In School

<https://forms.office.com/e/cF6pRRjFH7>



"As a father I feel I am a good enough parent and it's important we build safer relationships with our children."

"It's a relaxed, friendly atmosphere."

"I'm not alone and other parents go through the same."

"Open/talking, learning about us and not feeling alone as a father."

Speak to a member of the EPEC Team for further information or to book onto a course:

Phone: 07799913026 Web: bit.ly/EPECBAP

Email: EPEC@walthamforest.gov.uk

**Best Start
in Life**

**WALTHAM FOREST
FAMILY HUBS**


Waltham Forest