



WINNS WEEKLY

8.3.2024

آخر هفته خوبی
داشته باشید!

Farsi
Have a good weekend!



Headteacher: Fiona Judge / The Winns Primary School, Fleeming Rd. E17 5ET
020 8527 1872 / www.thewinnsprimaryschool.co.uk / office@winns.waltham.sch.uk

DATES FOR DIARIES WB 11.3.2024

- Monday 11th March** Parent and Children Yoga (Year 2 & 3)
- Thursday 14th March** Last day of travelling Book Fair in school
4KB Class Assembly (9:00)
Family Hub Coffee Morning (9:00-10:30)
Spurs Coaching Sessions (4EB, 6AM, 5CF)
RCP visit to Fire Station
- Friday 15th March** Spurs Coaching Sessions (4KB, 2LT)
RJC visit to Fire Station

Please remember to subscribe to [our online calendar](#) so that you receive automatic updates into your own calendar.

1AS CLASS ASSEMBLY

Well done to all the children in 1AS who performed their class assembly to parents and families on Thursday morning. We heard a very important message about kindness told through the story of Yeti and the Bird, and got to see some of the incredible writing the children have been working on. Thank you to Ms Sullivan and Ms Oksana for helping to prepare the children and to all of the families who came along to support your children.



ARC THEATRE COMPANY ANTI DISCRIMINATION WORKSHOPS

Our year 5 & 6 children took part in some live theatre workshops this week. We were visited by the Arc Theatre Company who presented to the children around the theme of "extreme" to help the children to understand the discrimination that exists in society and what we can do to combat it.



RECEPTION TRIP TO WALTHAMSTOW FIRE STATION

Our Reception children have begun visiting the local fire station this week to learn more from the experts about keeping safe both at home and at school. Thank you to station staff for being so welcoming and the parent volunteers who have accompanied the children so far!

INTERNATIONAL WOMEN'S DAY

We celebrated International Women's Day in school today, with all of the children taking part in both in-class activities and an assembly earlier in the week where they learned about the theme of gender equality and the history of the women's rights movement.



International Women's Day

OUR VISION IN ACTION

Exploring - Exploration took centre stage on Wednesday as our children were treated to a live and interactive show from the Royal Institution entitled Exploding Food. It was a perfect opportunity to bring some of the classroom learning to life in a fun way. After-school, a group of parents and children from years 4, 5 & 6 learned even more, exploring the key components to take a rocket into space!

Achieving - The achievement of some of our year 1 children was clear to see on Thursday morning as 1AS took centre stage to perform their class assembly. All of the children presented their work and delivered their lines confidently and proudly. It was fabulous to see the progress they have made in such a short space of time. Well done 1AS!



OUR VISION IN ACTION

Belonging - We take immense pride in the curriculum enrichment opportunities we provide to our children, and the live theatre workshop that our year 5 & 6 children were involved in this week is no exception. The children were able to explore themes of extremism and discrimination through a carefully crafted discussion and show, and they were left with many thought-provoking questions to reflect on back in class.

Growing - At The Winns Primary School, fostering role models begins early. Our children exemplify leadership through their dedication to each other. Whether assisting in the library or organising lost items during their playtimes and lunchtimes, they embody responsibility and kindness; values we hold dear at The Winns.

WORLD BOOK DAY CELEBRATIONS

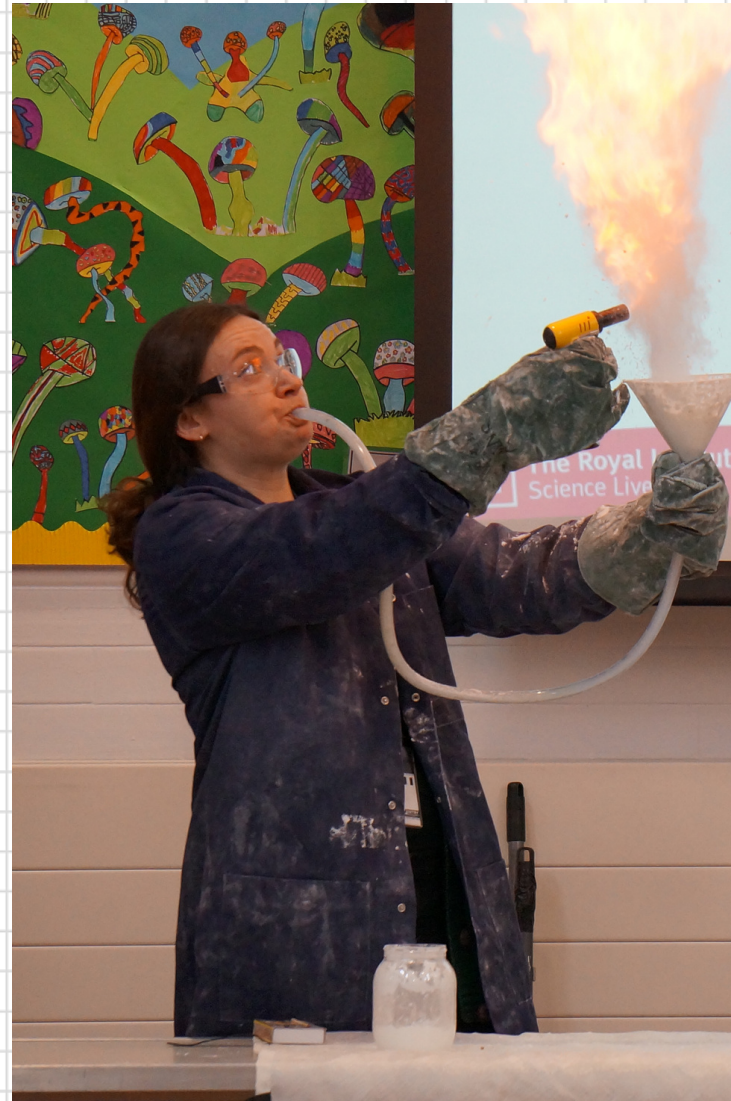
We celebrated World Book Day on Tuesday this week. It was fantastic to see so many children embracing the spirit of the day and dressing up as their favourite book character. We also welcomed CJ Storyteller back into school to share some of their favourite tales with all the children from Early Years up to Year 6.



Headteacher: Fiona Judge / The Winns Primary School, Fleeming Rd. E17 5ET
020 8527 1872 / www.thewinnsprimaryschool.co.uk / office@winns.waltham.sch.uk

RIGB SCIENCE SHOWS

Children and parents at The Winns were captivated by a series of exciting science shows this week as part of our build up to Science Week. There were amazing hands-on demonstrations that brought science to life in the most spectacular fashion and there was a real buzz all around the school. The shows certainly sparked a curiosity in many of our children, with many keen to recreate some of the action-packed experiments at home. A big thank you to all those parents who came along to the community show after school as well. We were able to bring the science shows to The Winns thanks to the Royal Institution of Great Britain's Science In Schools Grant. We are very grateful to the RIGB for providing us with this opportunity and hope to welcome them again next year.



WINNS BOOK SWAP

Following on from our successful World Book Day, we bring news of The Winns Book Swap. Taking place on the following days:

Friday 15th March 2024 (Years 3, 4, 5 & 6), in Green Hall and;

Friday 22nd March 2024 (Nursery, Reception, Years 1 & 2), in Red Hall

All we ask is that your child brings in an unwanted book from home that they no longer need and then swap for another book that they can take home and keep.

Please send in books on the day of your child's book swap (we will send out reminders close to the day). These will be collected and sorted on the day by our hard-working FOTW team and then children will come along in classes during the afternoon to pick up and take home a donated book. Simple!



Book Swap

SUSTRANS BIG WALK AND WHEEL 2024

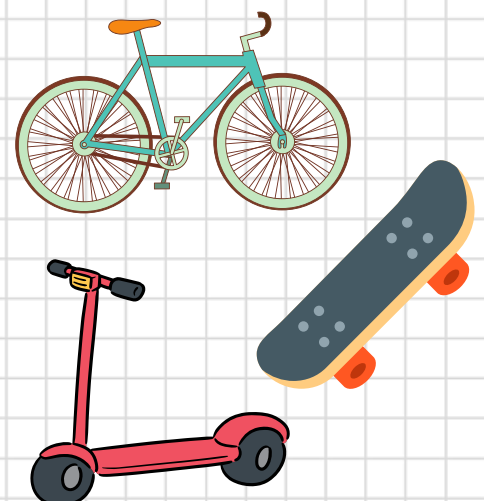
The Sustrans Big Walk and Wheel begins next week at The Winns. We are teaming up with schools across the country in the UK's largest school walking, wheeling, scooting and cycling challenge.

The Sustrans Big Walk and Wheel, formerly Big Pedal, runs from 11th - 22nd March 2024.

It highlights the benefits an active school run can have on children and young people's physical and mental health and on the environment. It also saves fuel and public transport costs for parents.

During the two-week challenge schools compete to record the greatest number of pupils walking, wheeling and cycling to school. Schools are entered into a daily prize draw for rewards including equipment and accessories if over 15% of pupils walk, wheel, scoot or cycle to school on that day of the challenge. For more information on how we are doing click [here](#).

Sustrans Big Walk and Wheel shines a light on how possible it is to swap polluting vehicles for a healthier, more active way to do the school run. Helping families to travel without a car is critical to cleaning up London's air.



WINNS WEEKLY

8.3.2024

Headteacher: Fiona Judge / The Winns Primary School, Fleeming Rd. E17 5ET
020 8527 1872 / www.thewinnsprimaryschool.co.uk / office@winns.waltham.sch.uk

WINNS WINDOW TRAIL 2024

And off we go!

Here is the link to the Winns Windows trail 2024:

<https://www.google.com/maps/d/u/0/viewer?mid=1-mpnNeZVIWqQ1sVqrBwzPqPJCK-iYfk&ll=51.592189087374955%2C-0.021024749999987158&z=14>

We have 45 homes decorating a window to celebrate World Book day.

Thank you all taking part so far; be it following the trail, hosting a sponsored sign or decorating a front window.

Here are some pictures of windows on the trail and we'll share pictures of different windows as the month progresses. The trail runs from the 1st-31st March 2024.



STORY WINDOW Trail 2024



Off we go!

To celebrate world book day 2024, over **40 Winns Homes**, so far, will be decorating their front window for the Winns Window Story Trail. Decorations will be up from the **1st-31st March 2024**.

Here is the link to the interactive Google map:

<https://www.google.com/maps/d/viewer?mid=1-mpnNeZVIWqQ1sVqrBwzPqPJCK-iYfk&ll=51.592189087374926%2C-0.021024749999987158&z=15>

Look out for the **Winns blue plaques** in the **decorated** windows.

It will also be emailed out to all Winns Families.

The blue star icon on the map show that it's a Winns home involved in the borough-wide trail.

And if you haven't signed up already and are feeling inspired to decorate, email **fotwvictoria@gmail.com** with your address and postcode; she can add your home to the trail map.



How many
Winns Story Windows
can you find?





EMPOWERING
PARENTS
EMPOWERING
COMMUNITIES

EMPOWERING PARENTS EMPOWERING COMMUNITIES

Ever feel like parenting is just too much?

**Empowering Parents Empowering Communities
classes are here to help**

Sessions are supervised by professional facilitators, and activities are led by trained EPEC parent group volunteers.

All volunteers are also parents who have enjoyed the EPEC sessions so much that they now wish to share their experiences with others

EPEC sessions are relaxed and informal.

You learn how to deal with tricky situations and keep cool when your children are having a meltdown

When: 18th April 2024 to 13th June 2024

How long : 7 weeks

When: Thursdays 10-12

Where: In School

<https://forms.office.com/e/cF6pRRjfH7>



"As a father I feel I am a good enough parent and it's important we build safer relationships with our children."

"It's a relaxed, friendly atmosphere."

"I'm not alone and other parents go through the same."

"Open/talking, learning about us and not feeling alone as a father."

Speak to a member of the EPEC Team for further information or to book onto a course:

Phone: 07799913026 Web: bit.ly/EPECBAP

Email: EPEC@walthamforest.gov.uk

**Best Start
in Life**

**WALTHAM FOREST
FAMILY HUBS**


Waltham Forest

SHOWKIDS

THEATRE SCHOOL



Easter holiday 4-day course A Musical Mash-up for children aged 5-12yrs

2nd-6th April, 9am-4pm

at The Winns Primary School, Walthamstow E17.

£250 (vouchers and tax free childcare payments accepted).

To book, please go to showkids.co.uk or
call Natalie on **0203 488 5384**



- Make new friends and have fun!
- Act, Sing, Dance
- Develop confidence, communication skills and creativity.



WALTHAM FOREST HOLIDAY ACTIVITY AND FOOD PROGRAMME

EASTER 2024

2 APRIL - 12 APRIL

ARE YOU AGED BETWEEN 5-16
AND IN RECEIPT OF BENEFIT-
RELATED FREE SCHOOL MEALS?

This Easter we have the opportunity for you to try a wide range of free activities, have fun, make friends and enjoy a free meal every day across the borough.

To book your place and find out more scan here:



or visit

[WALTHAMFOREST.GOV.UK/HOLIDAYS](https://www.walthamforest.gov.uk/holidays)

Booking is essential on all activities so book early to avoid disappointment

For queries please contact the Waltham Forest Holiday Activity Programme team on:

WFHOLIDAYACTIVITYPROGRAMME@WALTHAMFOREST.GOV.UK



Funded by

Department
for Education


Waltham Forest

PREGNANCY

- Midwife services
- Advice and support
- Prepare for baby classes



BEST START IN LIFE 0-5 YEARS

Our Best Start in Life programme offers a range of support and free sessions, for parents, carers and families with children aged 0-5 years including:

- Registering birth
- Infant feeding
- Health visiting including child health clinics
- Bonding with your baby
- Mental health support for parents and carers
- Baby massage
- Inclusive play and learning sessions for children of all abilities
- Activities to support your child's learning at home
- Free early education and childcare advice and support
- Get school ready

Best Start in Life



WALTHAM FOREST

FAMILY HUBS

WELLBEING, CONNECTION, SUPPORT

FAMILY WELLBEING IN YOUR NEIGHBOURHOOD

Our **Family Hubs** provide a wide range of information, activities and services in your local area including **Best Start in Life** programme, health, learning and play activities; family support, employment support, housing advice, money and benefits advice and much more.

We know that all families need support from time to time to look after their wellbeing and help their babies, children and young people thrive.

Our **Family Hubs** are a place where families, friends and professionals can come together in a relaxed and friendly environment and support each other.



walthamforest.gov.uk/familyhubs



FAMILY HUB LOCATIONS

Open Monday – Saturday,
check Hub website for timetables

- 1 Chingford Family Hub**
5 Oaks Grove,
Chingford, E4 6EY
- 2 Walthamstow Family Hub**
315 Billet Road,
Walthamstow, E17 5PX
- 3 Leyton Family Hub**
215 Queens Road,
Leyton, E17 8PJ
- 4 Leytonstone Family Hub**
2-8 Cathall Road,
Leytonstone, E11 4LF

There are play sessions
happening in your
neighbourhood.
Please contact your hub
for details

YOUTH SPACES LOCATIONS

To see all opening days and
times, please visit:
walthamforest.gov.uk/familyhubs



Find out about family activities
and sessions in your area

Contact our Family Information
service advice line on
020 8496 4965

Visit
walthamforest.gov.uk/familyhubs
for more information

ALL PARENTS AND CARERS OF 0-25 YEAR OLDS

- Free early education and childcare information
- Parenting support
- Access to food bank and baby bank services
- Speech, language and communication support
- Inclusive play and learning
- Advice and support on:
 - » Domestic and sexual abuse
 - » How to quit smoking
 - » Housing
 - » Employment, skills and volunteering
 - » Money and debt
 - » Wellbeing and mental health
 - » Bereavement
 - » Substance misuse/dependency
 - » Family relationships
 - » Crime and safety
 - » Migrant support
- Connection with other families
- Healthy families programmes, support with healthy eating, and dental health

9-19 YEARS

Youth spaces open to young
people as a safe space to
spend time



PARENTS AND CARERS OF CHILDREN WITH A DISABILITY OR LEARNING DIFFICULTY


- Play and activity sessions for children and young people with SEND
- The SEND Local Offer



SEND Family Support Groups - Spring Term 2024

Open to parents and carers of children aged 5-18 with SEND in mainstream schools in Waltham Forest. Come along and share experiences, discuss ideas, explore resources and develop a support network. All led by specialist Advisory Teachers.

ADHD	Friday 12th January 11-12 pm	https://www.eventbrite.co.uk/e/adhd-parent-support-group-with-wf-parent-forum-tickets-790986139837?aff=oddtcreator Onsite at Gill House, 99c Leyton Green Road, E10 6DB
	Friday 1st March 11 – 12 pm	https://www.eventbrite.co.uk/e/adhd-parent-support-group-with-wf-parent-forum-only-for-wf-parentcarer-tickets-793177163247 Onsite at Gill House, 99c Leyton Green Road, E10 6DB
Down's Syndrome	Wednesday 31st January 11 – 12 pm	https://www.eventbrite.co.uk/e/downs-syndrome-family-support-group-only-for-wf-parentscarers-tickets-793078247387 Onsite at Flourish Learning Trust E17 4AZ or Online
	Wednesday 20th March 11 – 12 pm	https://www.eventbrite.co.uk/e/downs-syndrome-family-support-group-tickets-793325928207?aff=oddtcreator Onsite at Flourish Learning Trust E17 4AZ or Online
Autism	Friday 2nd February 11 – 12 pm	https://www.eventbrite.co.uk/e/autism-parent-support-group-with-wf-parent-forum-tickets-793090122907 Onsite at Gill House, 99c Leyton Green Road, E10 6DB
	Thursday 8th February 11 – 12 pm	https://www.eventbrite.co.uk/e/autism-parent-support-group-tickets-793105920157?aff=oddtcreator Onsite at Flourish Learning Trust, E17 4AZ or Online
	Friday 15th March 11 – 12 pm	https://www.eventbrite.co.uk/e/autism-parent-support-group-tickets-793291986687?aff=oddtcreator Onsite at Flourish Learning Trust, E17 4AZ or Online

 UK Health Security Agency



Measles: Are you protected?

You need **2 doses** of the **MMR vaccine** for lifelong protection.

If you haven't had **both doses**, you could be at risk.

Contact your GP practice and book an appointment if you're not up to date.