



# WINNS WEEKLY

26.1.2024

Mitego weekendu!

Polish  
Have a good weekend!



Headteacher: Fiona Judge / The Winns Primary School, Fleeming Rd. E17 5ET  
020 8527 1872 / [www.thewinnsprimaryschool.co.uk](http://www.thewinnsprimaryschool.co.uk) / [office@winns.waltham.sch.uk](mailto:office@winns.waltham.sch.uk)

## DATES FOR DIARIES WB 29.1.2024

**Wednesday 31st January** Young Voices Concert at O2 Arena

**Thursday 1st February** ~~5BB Class Assembly (9:00)~~ **POSTPONED**  
Nursery Parent Tour (9:30-11:00)

**Friday 2nd February** NSPCC Number Day - Dress as Digits

Please remember to subscribe to [our online calendar](#) so that you receive automatic updates into your own calendar.

### YEAR 3 ART & POETRY WORKSHOP

Year 3 were visited this week by local artist and poet, Angry Dan. Dan is well-known for his limericks that are displayed around Walthamstow and beyond, using bright colours and visually striking graphics. The children were able to have a go at their own poetry in class under Dan's guidance, before coming together to work on pieces of art as a year group in the afternoon. For more information about Angry Dan and his work, you can visit [his website](#).



### OUR VISION IN ACTION

**Belonging** - We will be holding our next Equality, Diversity and Inclusion parent group meeting on Thursday 8th February. If you are interested in coming, please see the details on the pages below for how to register your attendance.

**Growing** - Our Superbloom gardening project continues to flourish. More photos of our young gardeners in action and the fruits of their labour can be found on the page below.



# WINNS WEEKLY 26.1.2024

Headteacher: Fiona Judge / The Winns Primary School, Fleeming Rd. E17 5ET  
020 8527 1872 / [www.thewinnsprimaryschool.co.uk](http://www.thewinnsprimaryschool.co.uk) / [office@winns.waltham.sch.uk](mailto:office@winns.waltham.sch.uk)

## YEAR 3 & 4 PANATHLON GAMES

A group of our year 3 & 4 children attended the Panathlon Games on Monday at Peter May Sports Centre. They competed in a range of sports activities alongside other Waltham Forest schools, performing incredibly well with limited experience of the different activities they took part in. Well done to all the children for representing the school so well and demonstrating all of the School Games values.



## YEAR 2 BAKE SALE

Well done to our year 2 children who hosted a charity bake sale on Thursday for their parents. We raised an incredible £307.23 for the charity Mind. Thank you to everyone who baked or sent in a cake, and of course to everyone who donated. It was a perfect opportunity for the children to show off the skills they had been learning in maths!



## GARDENING CLUB AND SUPERBLOOM UPDATE

A new year and new challenges for our Winns gardeners! Over the last few weeks, the cabbages that were sowed in October have finally been planted in one of new beds (thank you, Manny and Roberto!). It was a wonderful experience for the children to begin to see the process of growing vegetables from seeds. There will be lots more work in the coming weeks to keep the young crops healthy!



# WINNS WEEKLY 26.1.2024

Headteacher: Fiona Judge / The Winns Primary School, Fleeming Rd. E17 5ET  
020 8527 1872 / [www.thewinnsprimaryschool.co.uk](http://www.thewinnsprimaryschool.co.uk) / [office@winns.waltham.sch.uk](mailto:office@winns.waltham.sch.uk)

## EQUALITY, DIVERSITY AND INCLUSION - GROUP MEETING

We held two EDI working group meetings during the last academic year in order to engage with parents on ways to develop the school's approach to equality, diversity and inclusion. We looked at a number of different aspects, including developing our curriculum content and approach, recognising and celebrating different characteristics, wider use of EDI reading materials to promote greater awareness among our children and staff development, including unconscious bias training.



We are reaching out to those parents who took part in last year's meetings to continue this process and to warmly welcome along new members to a meeting taking place on **Thursday 8th February at 9:10am, (entry via the office)**. We can provide you with an update on where we are, in terms of curriculum development and canvas your ideas on how we can continue this work, provide details of initiatives we have undertaken to deal with specific issues like racism and to talk about continued staff development. You are more than welcome to bring along any ideas you want to share with the group as well. Refreshments will be provided and the meeting should last no longer than one hour. Please click on the link below to register your interest in coming along: <https://forms.office.com/e/9aANak0f5S>

## LONDON'S GREAT MENTAL HEALTH DAY

**GREAT  
MENTAL  
HEALTH  
DAY** IN LONDON



Now in its third year, Great Mental Health Day is a London-wide initiative that seeks to get us talking about our mental health and wellbeing.

The start of a new year is seen as a time for setting goals and a chance for positive change or action. But for many of us across our school community, things may continue to feel challenging or uncertain, particularly as cost-of-living pressures are impacting on many people's mental health and wellbeing.

In school we have been talking to the children about the importance of our mental health. You could also support your child at home - try using prompts such as, "sometimes I feel...because..." as a tool to encourage discussion.

If you need any support around this subject, James Baxter is our Emotional Health & Wellbeing Lead in school; he can be contacted through the main office.

## OUR VISION IN ACTION

**Exploring** - A group of our year 3 & 4 children had the chance to explore new sports activities at the Panathlon Challenge this week. Boccia and kurling were among the new things they tried. Well done everyone!

**Achieving** - Over the past few weeks, our children have been benefitting from the ideas that came from some recent staff training on writing. We have seen some marvellous creative pieces that showcase our children's talents. Great work!

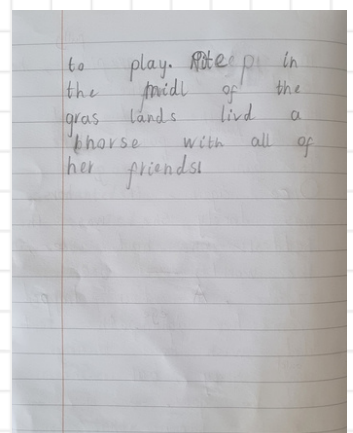
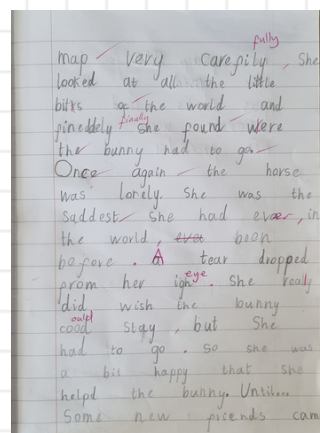
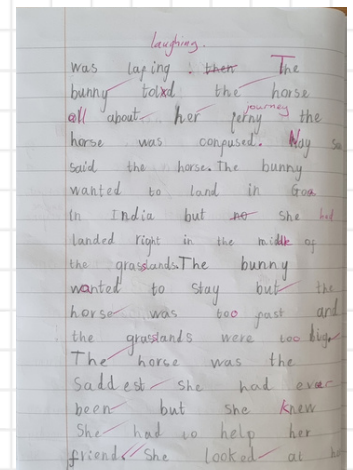
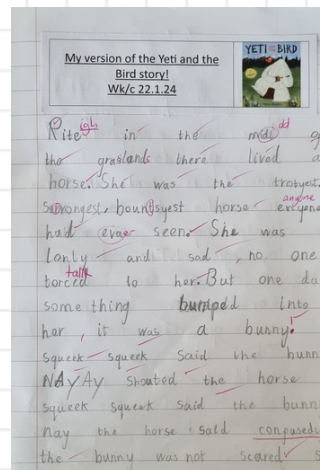


## WRITING IN YEAR 1

At The Winns Primary School, creativity is not just encouraged; it's celebrated. And lately, our children have been showcasing their incredible talent through some truly remarkable pieces of writing that have captivated all who have had the pleasure of reading them.

What's truly impressive is not just the creativity on display, but also the craftsmanship evident in each piece. Students have been honing their writing skills, experimenting with language, and mastering the art of storytelling, resulting in works that are both polished and engaging.

These exceptional pieces of writing not only showcase the talent of our children but also highlight the importance of fostering a love of writing. As we continue to nurture and support their creative endeavours, we look forward to even more inspiring works from the budding writers here at The Winns.



## PLAYGROUND DONATIONS

Do you have any unwanted/no-longer-loved toys at home that we could use in our playground at lunchtime? We are looking for the following items:

**Cats and kittens** – soft, teddy cats that can be cuddled and stroked – playing a game called 'Kittens' is very popular with some of our children and we are hoping to collect a large box of cat teddies.

**Duplo** – perhaps your child has moved on to Lego and you have some Duplo hanging around?

**Dressing up clothes**, including hats of different shapes and sizes

**Strong, plastic crates**

**Hard-bodied dolls**

**Small cars and trucks**

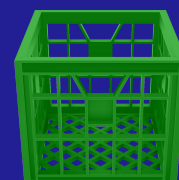
**Outdoor rugs**

**Picture books**

**Outdoor kitchen items**, including metal or wooden bowls, old saucepans and pans.

If you have any of the above items that you no longer need, please do drop them off at school where they will be put to good use at playtime.

Thank you!





Upper Key Stage 2 Parent Workshop

# Anxiety & Transitions

Hosted by Waltham Forest Mental Health Support Team

**JOIN US FOR COFFEE**

MONDAY 5<sup>TH</sup> FEBRUARY '24

9-10AM

OR JOIN US  
ONLINE 5-6PM

RSVP: [james.baxter@winns.waltham.sch.uk](mailto:james.baxter@winns.waltham.sch.uk)



**10% OFF**

**2024 JANUARY SALE**

**SAVE ON UNIFORM & BAGS ONLINE!**



**25th - 31st JANUARY!**

**10% OFF**



**YOUR SCHOOL UNIFORM**

**NEW CLEARANCE PAGE!**



**NON-LOGOED ADULTS & CHILDREN'S CLOTHING**

**10% OFF EVERYTHING...**

on your schools Parent Online Page.  
Only available when you order between Thursday 25th & Wednesday 31st January 2024 when you use the code below.


Find your school **HERE!** 

Enter code: **JSP24** at checkout

**All under £5!**

- SWEATS**
- POLOS**
- JACKETS**
- SKIRTS**
- CARDIS**
- FLEECES**
- T-SHIRTS**
- TROUSERS**

**...& much more!**

Shop **HERE!** 

Enter code: **JSP24** at checkout

**Enter: JSP24 at checkout**

# NELFT School Nurse 2024

Drop in sessions:

School health team are providing sessions offering advice and support on a range of topics including:

Healthy Eating

Head Lice

Hygiene- hand washing and oral; health

Bed wetting

Hearing and vision

Height- weight management

Emotional health

Or any other health related concerns you may have regarding your child

Available to all parents and pupils

If you would like to arrange an appointment please contact Allison Tokeley  
on 0208 527 1872 or email [Allison.tokeley@winns.waltham.sch.uk](mailto:Allison.tokeley@winns.waltham.sch.uk)



Please follow our Facebook page- NELFT Waltham forest school nursing

**Your school nurse is**

**Jessica Boateng**

**The next drop in session is:**

**Thursday 1<sup>st</sup> February 2024**

**Place: The Winns Primary School**

**Time 10-11am**



# Help your child grow and thrive! Family Learning



Our family learning programme delivers a variety of courses, workshops and events both in person, online and at different venues in Waltham Forest - courses and workshops are free for families.

## List of upcoming courses / workshops

Course Title	Venue	Date	Time	Day
Calm Parents, Calm Children 5 weeks	Leyton Children and Family Hub Queens Road	10.01.2024	10:00 – 12:00 pm	Wednesday
Families make a bird feeder	The Junction Centre E11	20.01.2024	10:00-12:00pm	Saturday
Monthly Craft Club	Queens Road learning centre	20.1.2024	10-12pm	Saturday
Storytelling and crafts for Chinese New Year	Walthamstow Library	03.02.2024	12:30-2:30pm	Saturday
Valentines crafts for your loved ones	Walthamstow Library	10.02.2024	12:30-2:30pm	Saturday
Family craft workshop – Half term	Lea Bridge Road Library	14.02.2024	1:15 – 3:15pm	Saturday

If you have any questions regarding family learning activities, please contact  
- [cherie.cowan-smith@walthamforest.gov.uk](mailto:cherie.cowan-smith@walthamforest.gov.uk) Curriculum Manager Family Learning

Enrol now through our website - [www.lbwfadultlearning.co.uk](http://www.lbwfadultlearning.co.uk)  
For more information email [adult.learning@walthamforest.gov.uk](mailto:adult.learning@walthamforest.gov.uk)





## SEND Family Support Groups - Spring Term 2024

Open to parents and carers of children aged 5-18 with SEND in mainstream schools in Waltham Forest. Come along and share experiences, discuss ideas, explore resources and develop a support network. All led by specialist Advisory Teachers.

ADHD	Friday 12th January 11-12 pm	<a href="https://www.eventbrite.co.uk/e/adhd-parent-support-group-with-wf-parent-forum-tickets-790986139837?aff=oddtcreator">https://www.eventbrite.co.uk/e/adhd-parent-support-group-with-wf-parent-forum-tickets-790986139837?aff=oddtcreator</a> Onsite at Gill House, 99c Leyton Green Road, E10 6DB
	Friday 1st March 11 – 12 pm	<a href="https://www.eventbrite.co.uk/e/adhd-parent-support-group-with-wf-parent-forum-only-for-wf-parentcarer-tickets-793177163247">https://www.eventbrite.co.uk/e/adhd-parent-support-group-with-wf-parent-forum-only-for-wf-parentcarer-tickets-793177163247</a> Onsite at Gill House, 99c Leyton Green Road, E10 6DB
Down's Syndrome	Wednesday 31st January 11 – 12 pm	<a href="https://www.eventbrite.co.uk/e/downs-syndrome-family-support-group-only-for-wf-parentscarers-tickets-793078247387">https://www.eventbrite.co.uk/e/downs-syndrome-family-support-group-only-for-wf-parentscarers-tickets-793078247387</a> Onsite at Flourish Learning Trust E17 4AZ or Online
	Wednesday 20th March 11 – 12 pm	<a href="https://www.eventbrite.co.uk/e/downs-syndrome-family-support-group-tickets-793325928207?aff=oddtcreator">https://www.eventbrite.co.uk/e/downs-syndrome-family-support-group-tickets-793325928207?aff=oddtcreator</a> Onsite at Flourish Learning Trust E17 4AZ or Online
Autism	Friday 2nd February 11 – 12 pm	<a href="https://www.eventbrite.co.uk/e/autism-parent-support-group-with-wf-parent-forum-tickets-793090122907">https://www.eventbrite.co.uk/e/autism-parent-support-group-with-wf-parent-forum-tickets-793090122907</a> Onsite at Gill House, 99c Leyton Green Road, E10 6DB
	Thursday 8th February 11 – 12 pm	<a href="https://www.eventbrite.co.uk/e/autism-parent-support-group-tickets-793105920157?aff=oddtcreator">https://www.eventbrite.co.uk/e/autism-parent-support-group-tickets-793105920157?aff=oddtcreator</a> Onsite at Flourish Learning Trust, E17 4AZ or Online
	Friday 15th March 11 – 12 pm	<a href="https://www.eventbrite.co.uk/e/autism-parent-support-group-tickets-793291986687?aff=oddtcreator">https://www.eventbrite.co.uk/e/autism-parent-support-group-tickets-793291986687?aff=oddtcreator</a> Onsite at Flourish Learning Trust, E17 4AZ or Online